

Release Notes – Version 5.6.106

StrataMax has been dedicated to meeting the needs of Strata Managers for over 30 years through the continual enhancement of our software suite. We are committed to providing new functionality to support you in servicing your clients and to provide opportunities for you to optimize efficiency within your office environment.

This document describes exciting new features and enhancements available in the above release.

A history of Release Notes can be reviewed on the [StrataMax Online Help](#)



THE COMPLETE STRATA MANAGEMENT SOLUTION



What's New.....3

- 1. Security Settings – Account Maintenance.....3
- 2. Financials – Account Summary – Account Group Buildings.....3
- 3. Report Distribution Enhancements.....4
 - 3.1 *New checkbox on Recipient lists now available.....4*
 - 3.2 *New Recipient Type - Owners.....6*

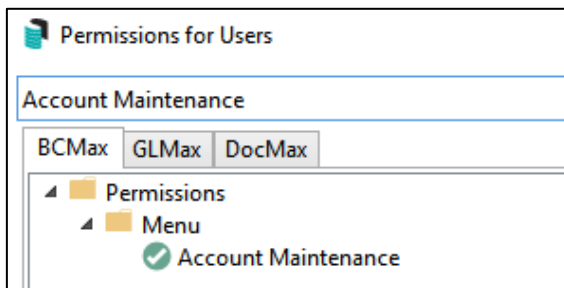
What's Better.....7

What's New

1. Security Settings – Account Maintenance

Security permission Add / Change / Delete has been renamed to Account Maintenance in BCMax and GLMax Security Setup.

To see this change navigate to Security Setup and click the BCMax or GLMax tab. Click in the search filter and type Account Maintenance.

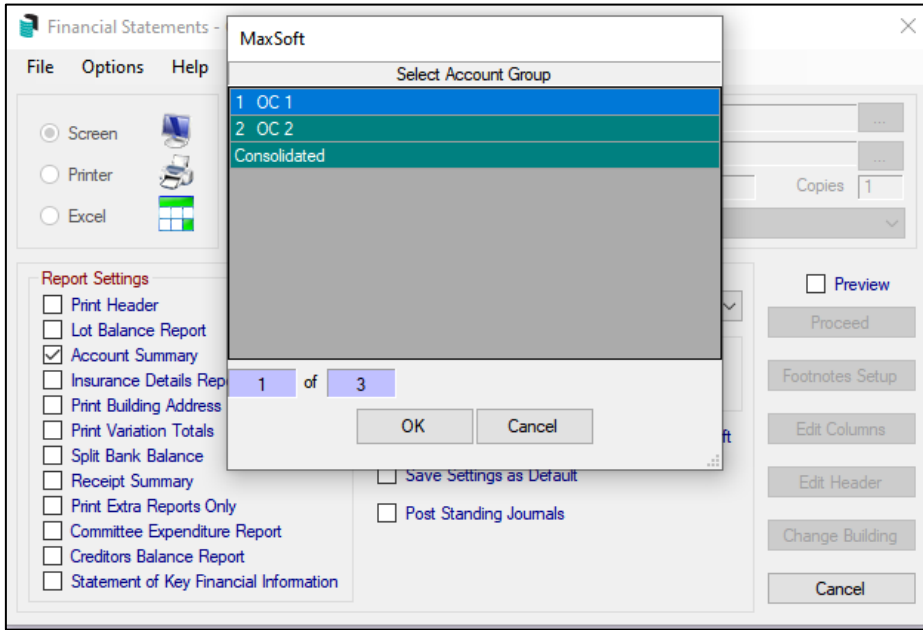


Note: Only the name has been changed. Permissions will remain as previously set for Add / Change / Delete.

2. Financials – Account Summary – Account Group Buildings

The ability to select a specific Account Group when running the Account Summary Report has been added in Financial Statements.

Open Financial Statements in an Account Group building and tick Account Summary Report. Click Proceed and the Account Group list will be presented.



- Highlight the required Account Group and click OK to produce data for the set Account Group only.
- Highlight Consolidated and click OK to produce data for all Account Groups.

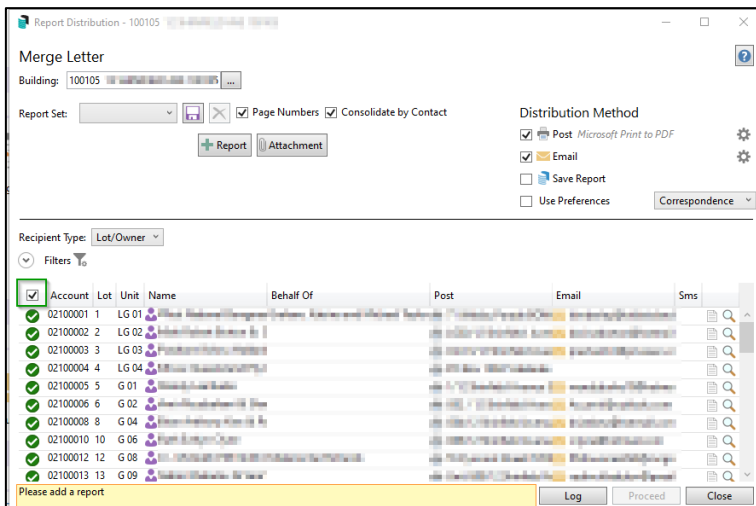
3. Report Distribution Enhancements

3.1 New checkbox on Recipient lists now available

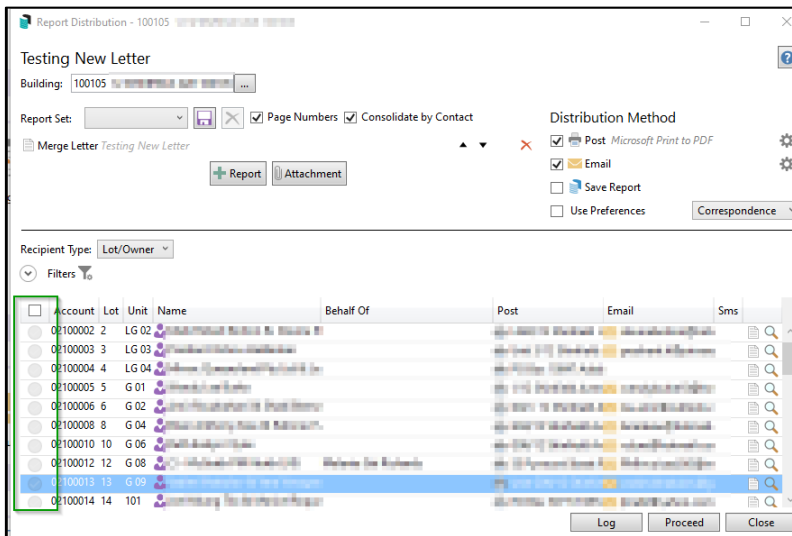
Improvements have been implemented to enhance the recipient selection process, allowing for tagging all, untagging all or manually selecting Recipients.

A new checkbox has been added to Report Distribution, which will:

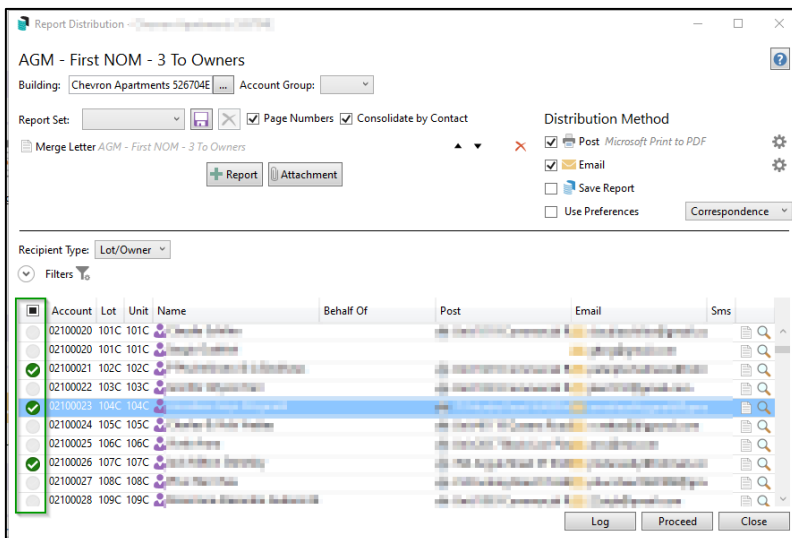
- Be defaulted as ticked (tag all) if the Recipient Type selected are typically tagged automatically based on the report type.



- Clicking the checkbox on or off will Tag or Untag all recipients.



- A mixture of tagged and untagged recipients will show the new checkbox as an intermediate state – black box (windows 10).



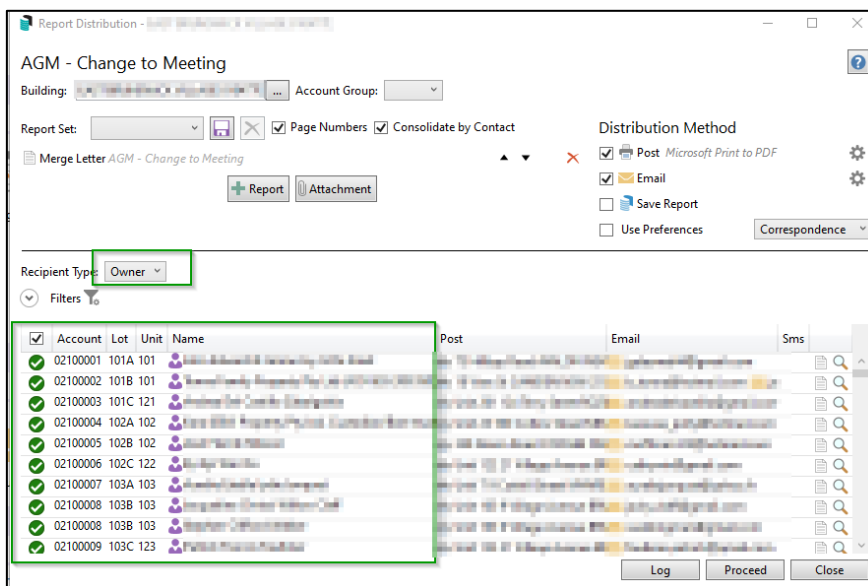
Please Note – This checkbox is a common control used throughout StrataMax and will apply to the following areas:

- Communications
- Bank Reconciliation – Reverse Receipt selection
- Bank Reconciliation – Match to Unpresented Screen
- Transaction Report Manager – bottom selection panel
- Process Recoveries – Select Building area in GLMax
- Meeting Hub – Merge Letter attachment selection
- Roll – Transfer Agent Portfolio option

3.2 New Recipient Type – ‘Owner’

A new ‘Owner’ Recipient Type has been added to Report Distribution and Communication modules. This feature allows users to send or email reports exclusively to owners, regardless of whether a lot has been marked for correspondence to be sent to an agent.

1. Navigate to Merge Letters
2. Select a Merge Letter
3. Click the Recipient Type
4. Select the new field ‘Owner’



Please note – If the building has Account Groups set up and an account group is selected then the only Owners that will automatically tag as default will be those that belong to the selected account group.

What's Better

- Utility Arrears overlay template elecarr_3 has been created and activated to replace legacy template elecarr03.
- Certificates - Cert119A will now reflect correct outstanding totals where there are Other Levies Unpaid. Formatting of Section headers has also been improved.
- EFT Manager - when the last rejected payment is reversed, the batch status was being updated to Complete instead of Prepare Emails.
- EFT Manager - Reversing an item was not greying out the item and authorise message was including the reversed amount. This has been corrected.
- Creditor Invoice - Reverse an invoice allowed selection of already paid invoices which was causing a crash, this has been corrected.
- Multi OC Levies - Lot Liability/Entitlement will now be multiplied by Entitlement Factor before output.
- Voting Register - Voting Register will now output correct entitlement factor where Net Entitlements is less than 1.
- Status Report - Cheques Output - Formatting of Cheques/Payments Amounts has been modified where the amounts are over 1000 to not add comma separators.
- Payments - Master Chart filter will now work if the master chart code is different from the building code. The performance of the Payment Selection query has also been improved.