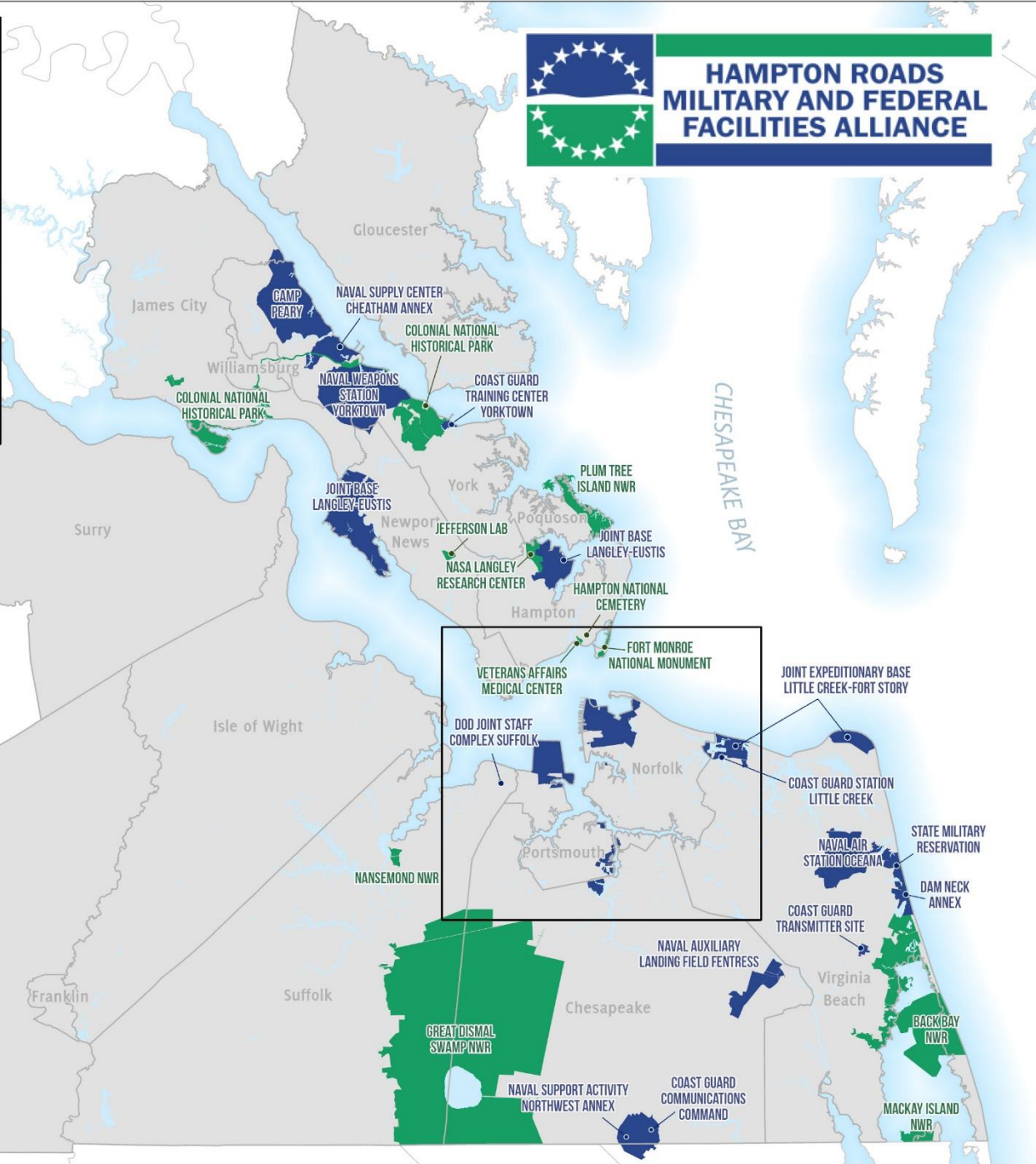


**HAMPTON ROADS
 MILITARY AND FEDERAL
 FACILITIES ALLIANCE**



MILITARY FACILITIES
OTHER FEDERAL FACILITIES
HRMFFA MEMBERS

- ★ All Military Branches in HR
- ★ 18 Military Installations
- ★ 2 Joint Bases
- ★ 140,000+ Active Duty, Reserve, and Civilians
- ★ 125,000 Military dependents
- ★ Nearly 220,000 Veterans



Naval Station Norfolk world's largest Navy Base



Langley Air Force Base world's longest continuously active Air Force Base

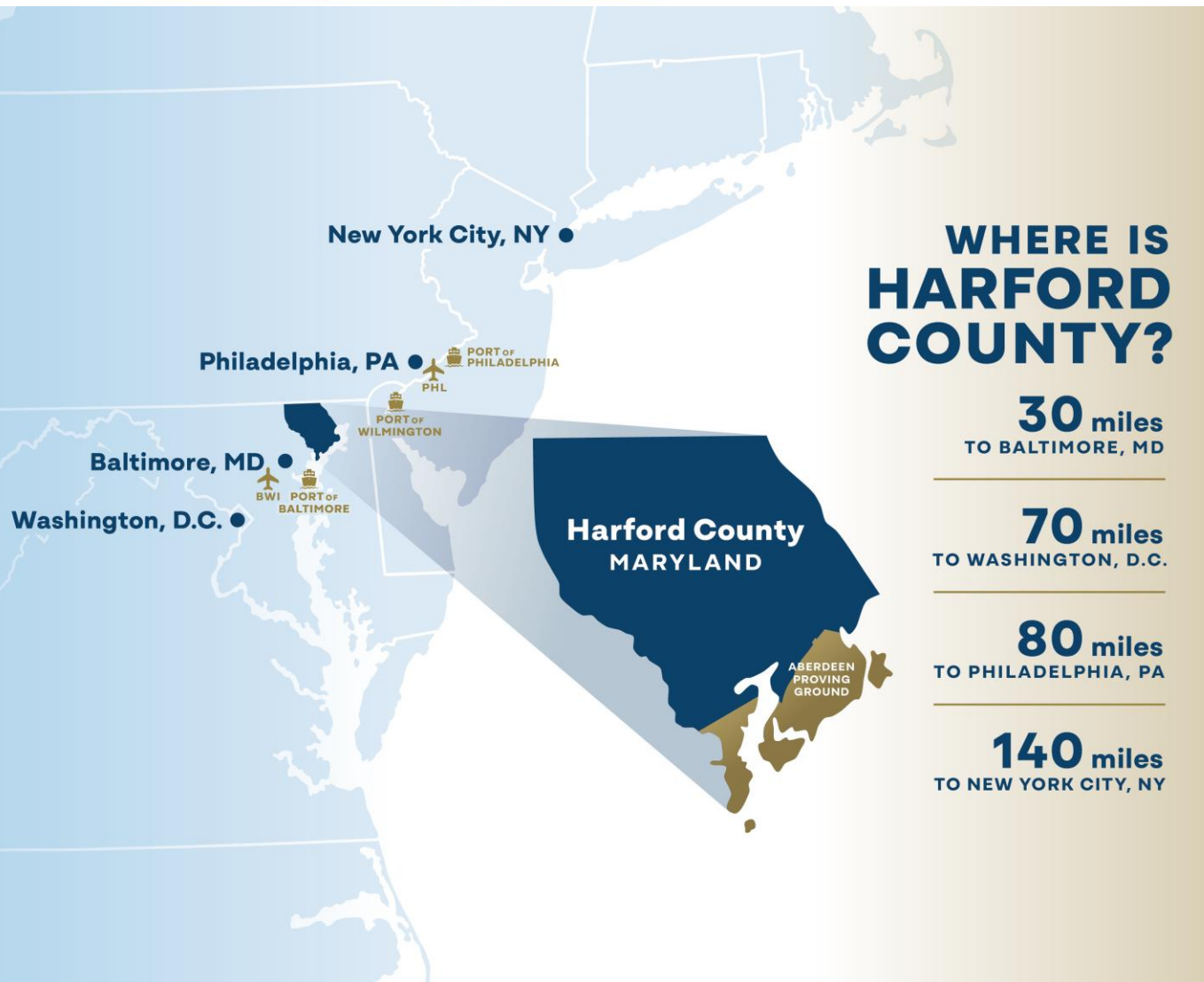


More Coast Guard personnel stationed in the region than any other place in the country



- ★ **USAF Air Combat Command**
- ★ **USA Training and Doctrine Command**
- ★ **US Fleet Forces Command**
- ★ **NATO Allied Command Transformation**
- ★ **Only NATO HQ in US**

Harford County & Its Defense Presence



Aberdeen Proving Ground:

- Harford County's largest employer
- U.S. Army research, development, test and acquisition installation
- ~ 21,000 employees, majority are DA Civilians and contractors
- 4,000+ advanced degrees among its workforce

Harford County, ranks in top 10% nationally for:

- Best for families
- Best for public schools
- Best for outdoor activities
- Best to live in


gro-MD Economic Analysis Study


(1 of 2)



- Partnered with 501 c (3)s located in Carroll County and Frederick County, MD for the Grow Rural Opportunity in Maryland project
- Received a ~\$274,000 grant from the Economic Development Administration (EDA) under its FY23 Build to Scale program to conduct research and analysis to identify opportunities for future economic growth in our tri-county region

GRANT AWARDEE:  Mid-Atlantic Gigabit Innovation Collaboratory (MAGIC)
Westminster, MD

SUB-RECIPIENTS:  Frederick Innovative Technology Center, Inc. (FITCI)
Frederick, MD

 **HARFORD COUNTY**
ECONOMIC DEVELOPMENT Harford County Department of Economic Development
Bel Air, MD



- With the grant, MAGIC, FITCI and Harford County Department of Economic Development independently analyzed their respective county economic ecosystems
 - Harford County competitively awarded a contract to Matrix Design Group
 - Effort included:
 - Stakeholder Engagements consisting of 23 sessions and 85 stakeholders
 - Data analysis using Impact Analysis for Planning (IMPLAN) and American Community Survey (from U.S. Census Bureau)

Disclaimer: *Grow Rural Opportunity in Maryland (GRO MD) is a tri-county project of the Mid-Atlantic Gigabit Innovation Collaboratory (MAGIC), Frederick Innovative Technology Center, Inc. (FITCI) and the Harford County Office of Economic Development (HCOED) using federal funds under award number ED23OIEOG0131 from the Economic Development Administration, U.S. Department of Commerce. To learn more, visit: <https://www.eda.gov/funding/programs/build-to-scale/past-grantees/2023-venture-challenge/Mid-Atlantic-Gigabit-Innovation-Collaboratory>. The statements, findings, conclusions, and recommendations of these activities are those of the presenter(s) and do not necessarily reflect the views of the Economic Development Administration or the U.S. Department of Commerce.*

STRENGTHS



- Strategic location and unique, small-town feel
- Harford County Public Schools and Harford Community College
- Aberdeen Proving Ground's unique military missions and potential
- Local healthcare
- Natural resources and land preservation programs

CHALLENGES



- Attraction of young professionals
- Coordinated vision for the future
- Competition for skilled workers
- Public transportation connectivity

OPPORTUNITIES



- Develop local workforce training pipelines in select industries
- Explore economic development at Aberdeen Proving Ground (new mission sets)
- Pursue targeted development projects (US Route 40 corridor; indoor sports complex)
- Develop local agricultural product processing

Recommendations / Next Steps



Align resources and community organizations

- Develop vision, branding, and marketing for the County's future
- Promote increased coordination between education and industry

Harness the potential of Aberdeen Proving Ground, which is the County's greatest economic driver

- Explore The Government and Technology Enterprise (GATE) complex as a defense contracting hub
 - The GATE is the largest Army Enhanced Use Lease
- Analyze defense contract award trends to keep contract work in Harford County

Expand key industries to spur economic growth

- Invest in an innovation incubator to promote biomanufacturing, small tech, and defense-adjacent industries
- Explore agricultural product processing, particularly for meat
- Pursue indoor sports complex and conference center

Executive Summary: <https://www.harfordcountymd.gov/DocumentCenter/View/26859/Grow-Rural-Opportunity-in-Maryland---Harford-County-Executive-Summary-Fact-Sheet>