


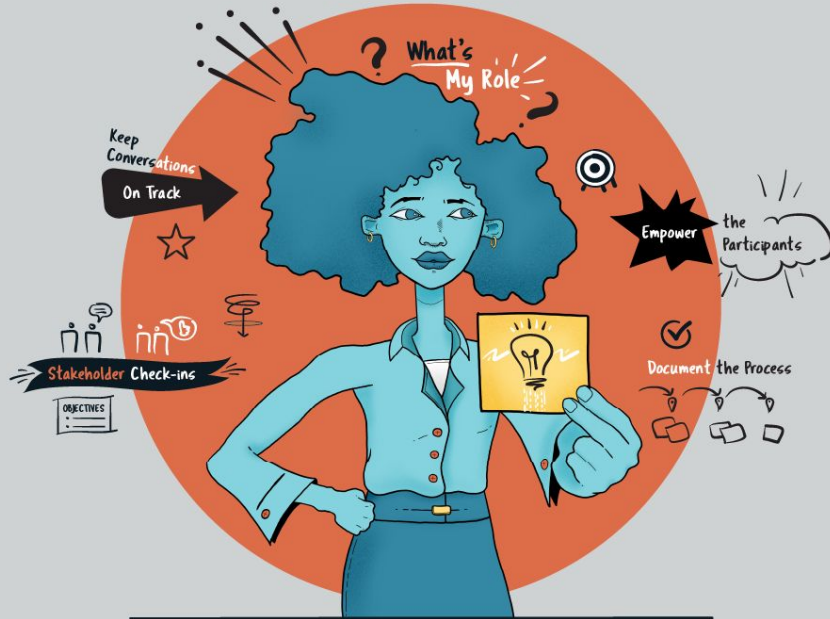


FACILITATION SLAM



Woden Teachout, PhD
Manager of Faculty Development
15 January 2024

Agenda



[Image Source](#)

1. What this is and how it will work
2. Openers/ Icebreakers
3. Content engagement
4. Closers
5. Takeaways

The slide features a light gray background. On the left side, there are several vertical white lines of varying thicknesses. A large, solid maroon circle is positioned on the left, partially overlapping the vertical lines. The text is centered on the right side of the slide.

GOAL

TO SHARE OUR COLLECTIVE
BEST TEACHING FACILITATION
MOVES AND TO BRAINSTORM
HOW TO USE THEM



A Venn diagram consisting of two overlapping circles. The left circle is labeled 'Slam' and the right circle is labeled 'Facilitation'. The overlapping area in the center is shaded a darker blue than the individual circles. The text is white and centered within each circle.

Slam

A competitive open mic event where participants perform their original work in front of a live audience.

Facilitation

the process of guiding a group discussion or activity to ensure effective participation, collaboration, and learning.

EXAMPLES

Openers/ Icebreaker

Polling
Speed Networking
Chat waterfall
Silly Handshake

Content Engagement

Image Use
Dramatic Reading
Role-play
Evaluation Exercise
Whiteboard
1-2-4-all
Brainstorming

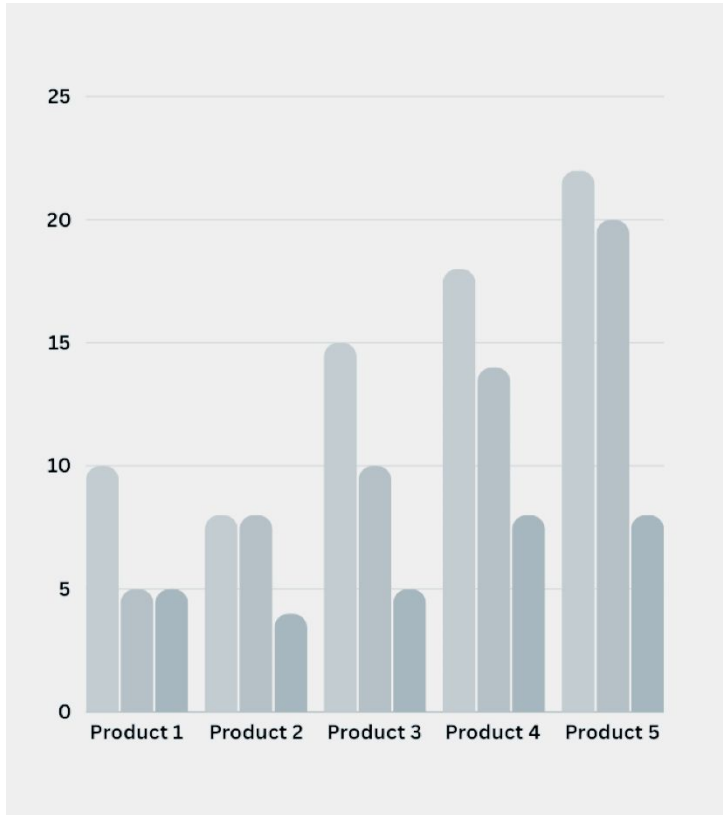
Closers

Exit Tickets
One Minute Paper
Word cloud
Waterfall

A decorative graphic on the left side of the slide consists of several thin, vertical, light-colored lines of varying thicknesses. To the left of these lines is a large, solid, muted purple circle. The text 'OPENERS/ ICEBREAKERS' is positioned to the right of the lines and the circle.

OPENERS/ ICEBREAKERS

USING POLLS



CHAT WATERFALL

1. Ask students to type a response in the chat but not to press send.
2. When you tell them, they press send and all the responses waterfall in



SPEED NETWORKING



Goal: for participants to meet others, actively engage with the content, and surface existing expertise

Instructions:

You will have two pairings, each lasting two minutes:

- a. For the first pairing, talk about what you bring to this workshop
- b. For the second pairing, talk about what you want from the workshop

We will come back to the large group and debrief.

A decorative graphic on the left side of the slide consists of several thin, vertical white lines of varying thicknesses, and a large, solid maroon circle partially overlapping the bottom of these lines.

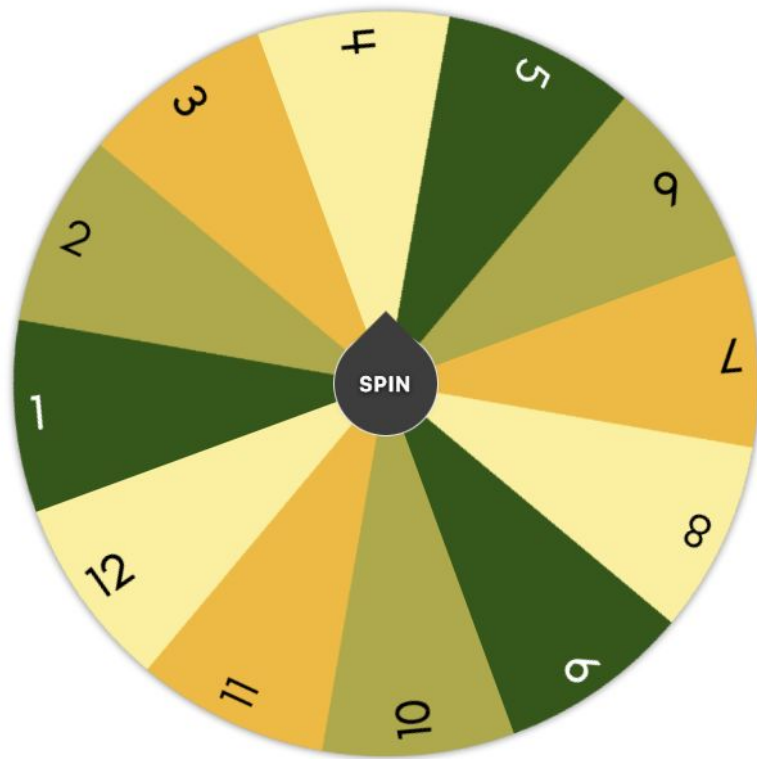
CONTENT ENGAGEMENT

BRAINSTORM - Google Docs

Question: What are some of the best facilitation activities that you have experienced as a participant?



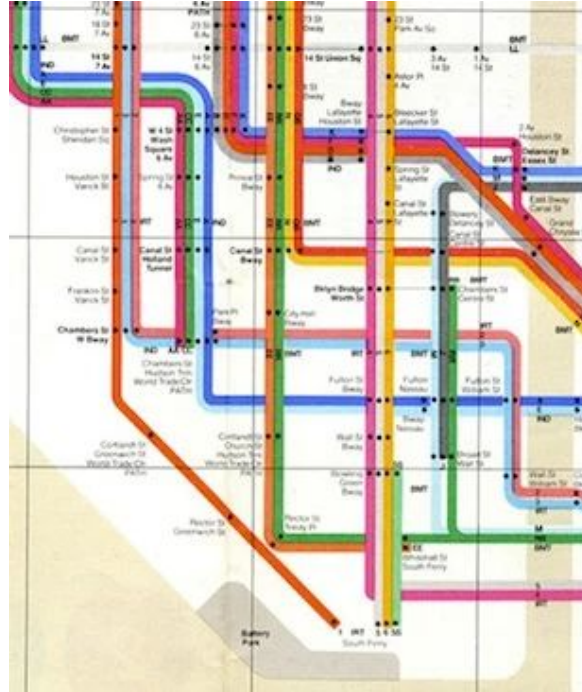
WHEEL SPINNER



USING IMAGES

Prompt: You are the New York City Transit authority tzar deciding on an official map for the subway.

- 1) Which do you choose?
- 2) Why?



STUDENTS AS EVALUATORS

Scenario: Your classmate is working on his paper. His draft argument is in the purple box.

- a) Poll: Use the rubric below to evaluate the argument.
- b) Small groups: Draft 1-2 suggestions for how to strengthen the argument.

Access to clean water is a fundamental human right that requires increased global attention and resources to prevent health crises in underserved regions.

	Needs Improvement	Satisfactory	Excellent
Debatability	The argument presents a statement of fact or a widely accepted idea, offering little room for debate or differing opinions.	The argument presents a claim that allows for some discussion, but may lean towards being obvious or lacking complexity.	The argument proposes a nuanced and contestable claim, inviting robust debate and multiple interpretations.

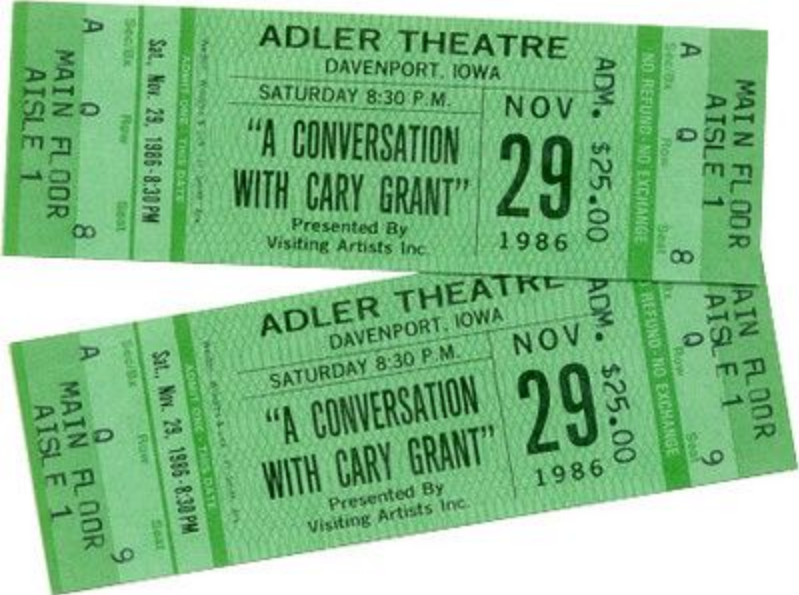


CLOSERS

ONE MINUTE PAPER



EXIT TICKETS

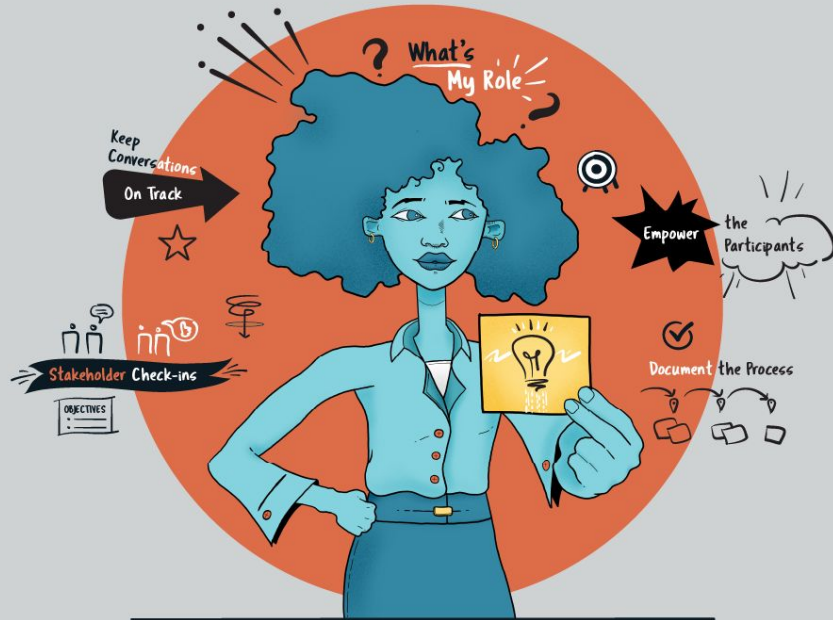


One thing you have learned

One question you have

ACTIONABLE TAKEAWAY

THANK YOU



[Image Source](#)

Please reach our Faculty Development team at
FacultyDevelopment@extension.harvard.edu